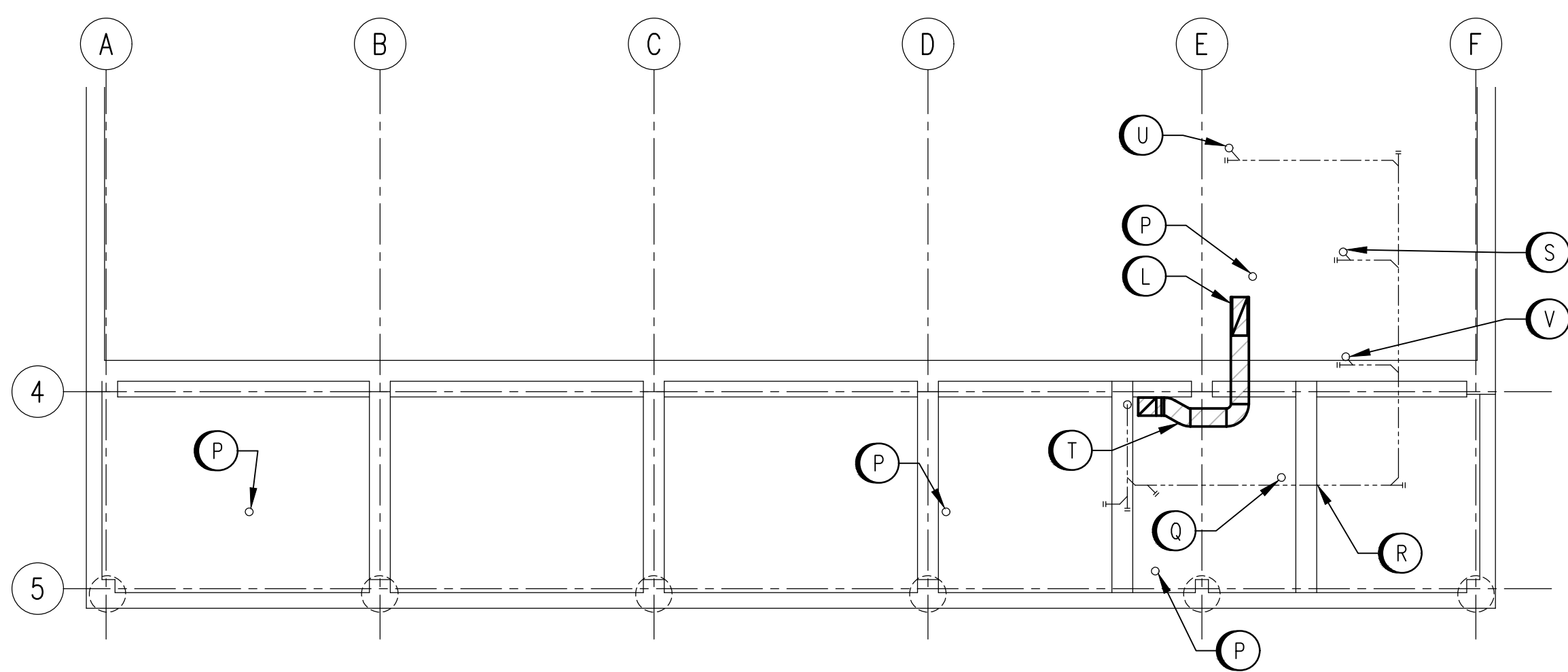
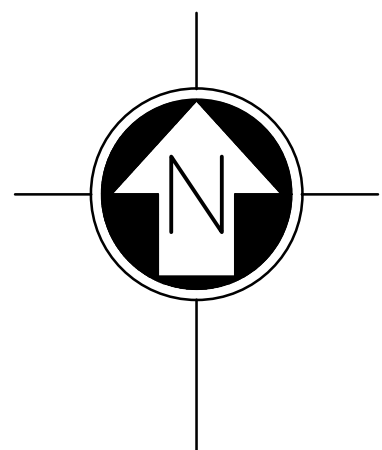


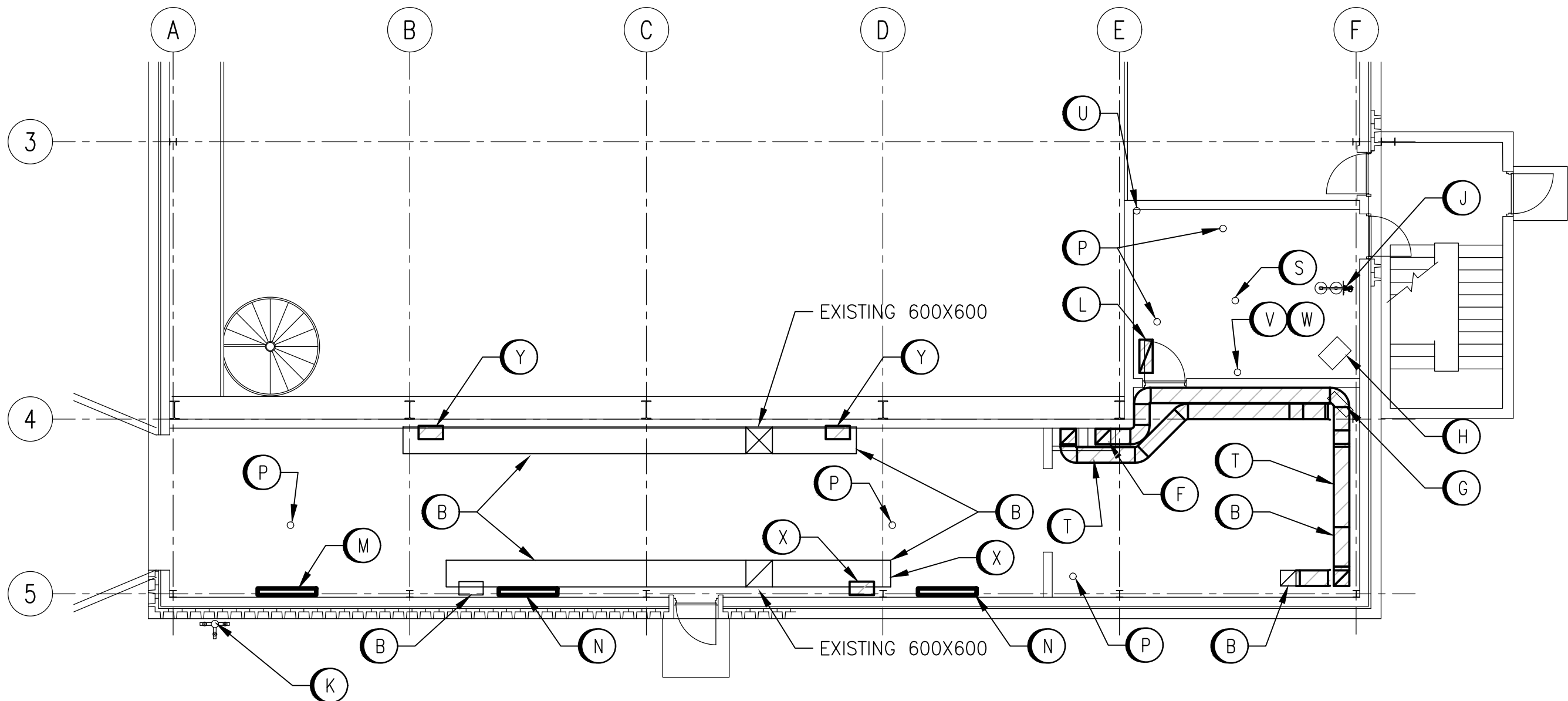
LAST SAVE: 2025/04/23 - 10:49am
PATH: \\WINPDC1.slbz\PROJ\694715-ENG\45MEC\DD - General DWG\HURST\1-0650M-MXXX-001-PD.dwg

A1 SIZE - 594mm x 841mm



CRAWLSPACE - REMOVALS

SCALE: 1:100



MAIN FLOOR - REMOVALS

SCALE: 1:100

DEMOLITION NOTES

- (A) REMOVE EXISTING EXHAUST FAN (DS-EFF-1) AND ASSOCIATED DUCTWORK TO ROOF CURB. ROOF CURB TO REMAIN.
- (B) EXISTING DUCTWORK TO REMAIN.
- (C) EXISTING EQUIPMENT TO REMAIN.
- (D) REMOVE EXISTING EXHAUST FAN (DS-FAN-1). EQUIPMENT CURB TO REMAIN AND BE PREPARED FOR NEW EQUIPMENT.
- (E) EXISTING GOOSENECK TO REMAIN.
- (F) EXISTING DUCTWORK, ACTUATOR, DAMPER AND ASSOCIATED WALL GRILLE TO BE REMOVED.
- (G) EXISTING UNIT HEATER (NOT SHOWN) TO REMAIN.
- (H) EXISTING UNIT HEATER TO REMAIN.

DEMOLITION NOTES

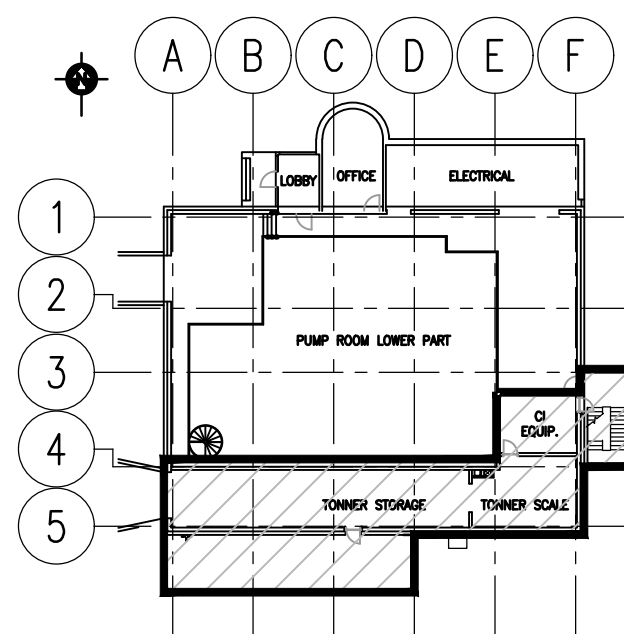
- (J) EXISTING EYEWASH/SHOWER STATION TO REMAIN. DISCONNECT DCW SUPPLY AT SAFETY SHOWER/EYEWASH STATION. DISCONNECT TEMPERED WATER AT EYEWASH. REMOVE TEMPERED WATER PIPING AND EXISTING MIXING VALVE AND CAP DCW AND DHW SUPPLIES.
- (K) EXISTING FIRE PROTECTION STANDPIPE TO REMAIN.
- (L) EXISTING FLOOR GRILLE TO BE REMOVED. DUCT TO BE REMOVED BELOW FLOOR. REFER TO STRUCTURAL FOR FLOOR AND WALL REPAIR.
- (M) EXISTING ELECTRIC BASEBOARD HEATER TO BE REMOVED AND STORED FOR REINSTALLATION AFTER BUILDING ENVELOPE MODIFICATIONS.
- (N) EXISTING ELECTRIC BASEBOARD HEATER TO REMAIN.
- (P) FLOOR DRAIN PREVIOUSLY ABANDONED.
- (Q) EXISTING FLOOR DRAIN TO BE SEALED. DISCONNECT FROM EXISTING WASTE PLUMBING. MAKE WASTE PIPING GOOD.
- (R) EXISTING DRAINAGE PLUMBING TO REMAIN.

GENERAL NOTES

- DRAWING INFORMATION BASED ON HISTORICAL DRAWING AND SITE INVESTIGATIONS.
- INSULATION ON ALL EXISTING DOMESTIC WATER, FRESH AIR INTAKE, RAIN WATER LEADER, CONDENSATE AND DRAIN PIPE FITTINGS MAY CONTAIN ASBESTOS MATERIALS.
- MASONRY BLOCK WALLS, CEILING OR WALL HARD PLASTERS AND CERAMIC FLOOR TILES MAY CONTAIN ASBESTOS.

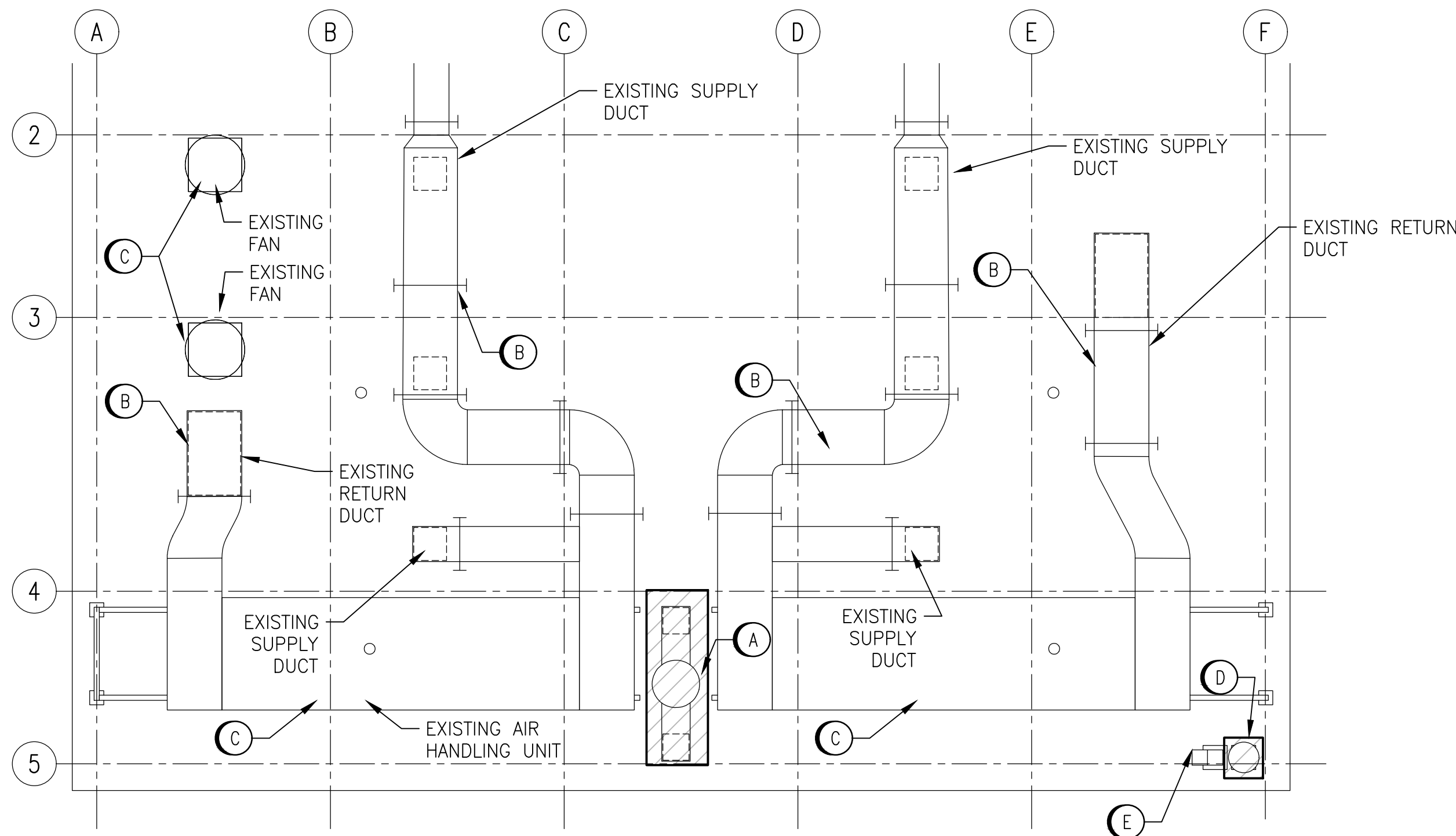
LEGEND

	EXISTING EQUIPMENT
	EQUIPMENT TO BE REMOVED
	DUCT WORK TO REMIAN
	DUCT WORK TO BE REMOVED
	DRAINAGE PIPING TO REMOVE



KEY PLAN

SCALE: NTS



ROOF PLAN - REMOVALS

SCALE: 1:100

DEMOLITION NOTES

- (S) EXISTING FLOOR DRAIN TO REMAIN.
- (T) EXISTING 350x350 DUCT TO BE REMOVED.
- (U) EXISTING RAINWATER LEADER TO REMAIN.
- (V) SINK DRAIN TO REMAIN.
- (W) EXISTING OPEN DRAIN TO REMAIN.
- (X) EXISTING 550x300 DUCT AND GRILLE TO BE REMOVED AT TRUNK. TRUNK TO BE REPAIRED AFTER THE BRANCH IS REMOVED. TRUNK TO BE MODIFIED FOR DUCT EXTENSION.
- (Y) EXISTING 550x350 DUCT TO BE MODIFIED AND PREPARED FOR NEW GRILLE.

METRIC

WHOLE NUMBERS INDICATE MILLIMETRES
DECIMALIZED NUMBERS INDICATE METRES



1:100

1-0650
1-0650

DRAWING NUMBER REFERENCE DRAWINGS

**ENGINEERS
GEOLOGISTS
MANITOBA**
Certificate of Authorization
AtkinsRéalis Canada Inc.
No. 4489

AtkinsRéalis
148 Nature Park Way, Winnipeg, Manitoba
Canada R3P 0X7 204-786-8080

DESIGNED BY: T. SHAW
CHECKED BY: S. NORSWORTHY
DRAWN BY: M. CAUDINO
APPROVED BY: S. NORSWORTHY
SCALE: AS NOTED
ISSUED FOR CONSTRUCTION BY: M. SKINNER
DATE: 2023-03-06
DATE: 2025/04/30

CONSULTANT NO.: 694715-1000-45DD-1001

ENGINEER'S SEAL



THE CITY OF WINNIPEG
WATER AND WASTE DEPARTMENT

HURST PUMPING STATION
CHLORINE SYSTEM UPGRADE
MECHANICAL
REMOVALS

CITY DRAWING NUMBER
1-0650M-M0011
SHEET
001
REV.
00
SIZE
A1

1-0650M-MXXX-001-PD.dwg